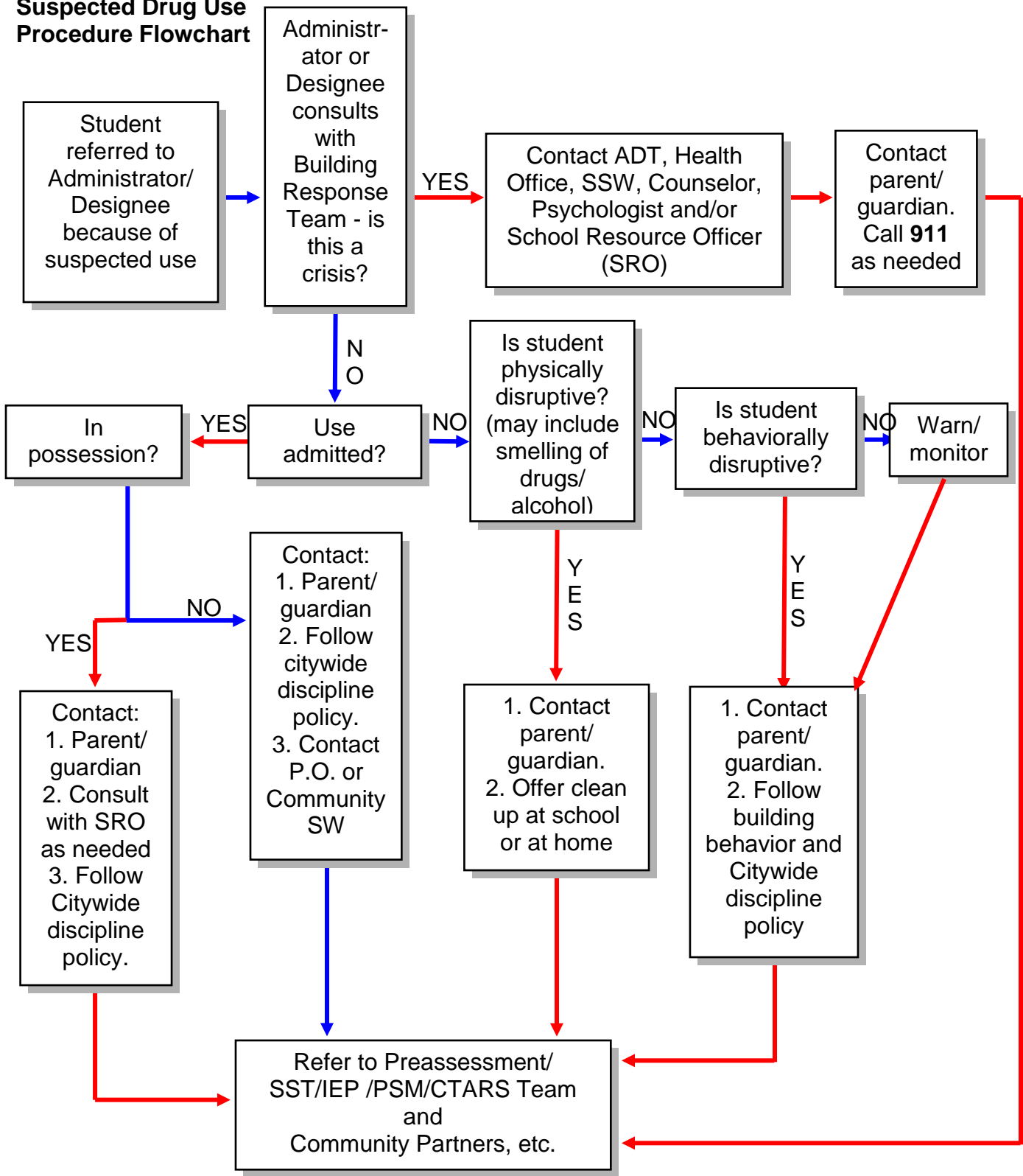


Suspected Drug Use Procedure Flowchart



Flowchart Abbreviation Guide:

ADT= Alcohol & Dug technician, SSW = School Social Worker P.O. = Probation Office, SSW =Social Worker
 SST= Student Support Team, IEP = Individual Education Plan PSM = Problem Solving Model (Team) CTARS = Comprehensive Teaming to Assure Resiliency in Students

Revised: 02/23/2011